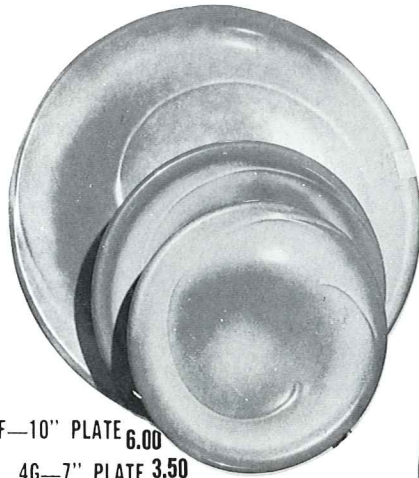


*4K—BUTTER DISH
6.50



4F—10" PLATE 6.00
4G—7" PLATE 3.50
4E—5" SAUCER 2.75



2.75
*5CC—5 OZ. TEACUP



3.25
*4X—14 OZ. CEREAL



*5L—12 OZ.
TUMBLER
3.75



*5LC—6 OZ.
JUICE
3.25



4C—CUP
3.25



3.00
*4Y—6" SPOON HOLDER



*4H—SALT & PEPPER
4.75



*4SC—11 OZ. SOUP CUP
3.75



9.25 *4V—2 QT. BAKER/BEAN POT
16.50 *4V/W—BAKER/W WARMER SET



4A—8 OZ. CREAMER
3.25



4B—SUGAR WITH LID
5.00

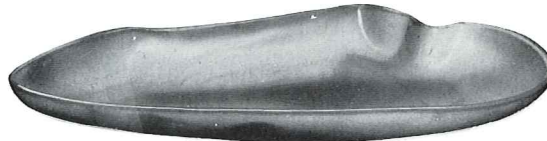


*4M—18 OZ. MUG
4.50

4AB—CREAM & SUGAR SET
8.00



*4N—24 OZ. VEGETABLE
4.75



*4P—13" PLATTER
7.75



*M2—18 OZ. STEIN
4.50



*224—8" ROUND BOWL
6.50



13.25 *4W—3 QT. BAKER/BEAN POT
20.50 *4W/W—BAKER/W WARMER SET



*4QD—11" DIVIDED BOWL
7.75



4.75
*201—9" BOWL



*242
CORN DISH
2.50



*XO—3 OZ.
SINGLE SERVING BOWL
1.50



*BP—6 OZ. BEAN POT
OR CUSTARD
2.75



*4XL—24 OZ. SALAD
OR GUMBO
3.75



*243—6½" CRESCENT SALAD
2.50



*249 TACO HOLDER
BOXED 2 PER BOX 10.00
Not Available in Flame



*4D—2 QT. PITCHER
9.25

THIS PAGE AVAILABLE IN PRAIRIE GREEN, DESERT GOLD, BROWN SATIN, COFFEE BROWN & ROBIN EGG BLUE, EXCEPT WHERE NOTED*

*AVAILABLE IN: 10 STANDARD COLORS PLUS COFFEE BROWN AND NAVY BLUE — EXCEPT WHERE NOTED.

ADD 50% FOR FLAME. Dinnerware Not Available in Terra Cotta. SIZES ARE APPROXIMATE AND MAY VARY SLIGHTLY. Page 23